

North West River Basin District

Draft River Basin Management Plan (dRBMP) consultation – guide to finding local or catchment information

26 January 2022

Audience: External

Question: How can I find information about my community and or catchment, including the objectives for the water environment?

Sharing this with colleagues, the public, catchment hosts and RFCCs might be a useful way to save time responding. It can reduce the steps or 'clicks' to finding local or catchment information. We're hoping this makes it easier for you to respond e.g. taking you straight to your catchment [page](#) - see dRBMP [step 5](#) below.

FRMPs – consultation 22 October to 21 January 2022

1. Draft FRMPs consultation landing page [here](#)
2. Consultation information page [here](#)
3. FRMP GOV.UK [here](#)

RBMPs – consultation 22 October to 22 April 2022

- Draft RBMPs consultation landing page [here](#), summary [here](#)
 - Introduction and guide [here](#) describing how to use the system and the basics and consultation documents [here](#)
 - The consultation questions 1 to 6 are below and have web links to relevant information
1. What are your views of these principles? When thinking about your answer, you may wish to consider how easy (or hard) you would find adopting the principles – link [here](#) (section2.1)
 2. Do you agree with the [environmental objectives in this draft plan](#)? - Which, if any, objectives or targets would you like to see changed and why?
 3. Are you aware of any funded measures that are missing from the [programmes of measures](#)? - Please let us know what measures are missing



4. Do you have any comments on the potential new measures set out in the programmes of measures? Please tell us about any other new measures that could be taken forward with support from partners to achieve the objectives in the plans. Find out more using our summary [here](#)

5. Do you have any comments on the challenges and measures suggested as priorities in your local [catchment partnership's page](#)? If your response applies to a specific catchment partnership page, please select from list below (if it relates to more than one, please list them in your response above)

6. Do you have any further comments on the draft river basin management plans, not covered by the previous questions?

Worked example: Here is an RBMP example for the Mersey Lower Catchment Partnership in the North West Area. You can apply same steps for other places in this Area and in England.

1. Objectives including for 2027 for the Mersey Lower catchment [here](#)

Department for Environment Food & Rural Affairs
Data Services Platform

Environment Agency
Home Search Help API


[Home](#) / [North West](#) / [Mersey Lower](#) / Objectives data

Objectives data for Mersey Lower Management Catchment

Viewing draft river basin management plan data. [Switch to latest data](#)

The objective is the planned status of a water body that must be achieved or maintained. There are two different status objectives for each water body. For surface waters these are ecological status or potential objective and chemical status objective; for groundwater these are quantitative status objective and chemical status objectives. The water body objectives are derived from the objectives for the relevant individual elements within the water body.

Find out more information on objectives in the [Summary of the draft river basin management plans document](#).



Ecological status or potential objectives for surface water bodies

Including those with less stringent objectives and extended deadlines

Status	Bad	Poor	Moderate	Good	High	Total
By 2015	0	1	5	0	0	6
By 2024	0	0	0	0	0	0

2. Mersey Lower catchment measures

View local or catchment measures or actions in the excel spreadsheet [here](#) called ‘draft RBMP summary programme of measures’. Do this by using the search or filter function in excel to refine your location of interest. The screenshot below shows the measures for the Mersey Lower catchment

PoM category	Mechanism/Measure	Measure Info	Broad Type of Mechanism	RBD	Management Catchment	Operational Catchment	WB Name	Waterbody ID(s)	Environment Objective relevant to
Not linked to 2027 outcomes	Bringing the River Irk to Life - BRL	Catchment wide prioritised programme of projects improving water quality, river and floodplain habitats, biodiversity and amenity value, and where possible reducing flood risk	Partnership	North West	Inwell	Irk			Multiple
Not linked to 2027 outcomes	Chester Wetland Centre	Improving water quality, ecology and mitigation measures creating a 14 hectare wet meadow in Chester. Part of the wider Green Link Project, establishing a series of unique green corridors across Chester.	Partnership	North West	Dee				Multiple
Not linked to 2027 outcomes	Great North Bog	Sphagnum and moorland plants planting, gully blocking and monitoring.	Multiple	North West	Various	Various	Various	Various	Multiple
Not linked to 2027 outcomes	Inwell Barriers - making the impassable possible	A catchment wide rolling programme of barrier removal/fish easement/fish pass feasibility, design and construction	Partnership	North West	Inwell	Various			GEP
Not linked to 2027 outcomes	Moors for the Future	Sphagnum and moorland plants planting, gully blocking and monitoring.	Multiple	North West	Various	Various	Various	Various	Multiple

Please note: there are also National measures which may apply to North West river basin including Mersey Lower catchment not included above e.g. Strengthen ‘Improving the Valley Brook corridor in Crewe including heavily modified waterbodies mitigation measures, urban diffuse pollution, improving fish passage and reconnecting flood plain, deculverting and sustainable drainage schemes. Supporting green growth and a sustainable future’

3. Steps to your catchment pages and local information

Example: Mersey Lower

- Using the search function on Catchment Data Explorer (CDE) automatically takes you to the ‘latest data’ view of what you are searching for.
- You have to click on the link under the heading to view “draft plan data”.
- You can only access catchment partnership pages on the “draft plan data” CDE view. Partnership pages are on the management catchment pages on CDE, one page below river basin district.
- Click on the map or links to the left-hand side to find the management catchment (or search for it and switch to draft plan data). Scroll down to below the data section on that page to find link to the catchment partnership page.



Step 1 – click North West [here](#)

https://www.gov.uk/government/collections/draft-river-basin-management-plans-2021

Collection

Draft river basin management plans: 2021

River basin management plans (RBMPs) describe the challenges that threaten the water environment and how these challenges can be managed and funded.

From: [Environment Agency](#)
Published 22 October 2021

Contents

- [Anglian RBD](#)
- [Humber RBD](#)
- [Northumbria RBD](#)
- [North West RBD](#)
- [Severn RBD](#)
- [South East RBD](#)
- [South West RBD](#)

Related content

- [Summary of the draft river basin management plans](#)
- [River basin planning: progress report](#)
- [Guide to the draft river basin management plans](#)
- River basin planning programmes of

Step 2 – Click North West dRBMP data on Catchment Data Explorer [here](#)

North West RBD

These links and documents form the North West RBD dRBMP. You can access:

- [North West dRBMP data on the catchment data explorer](#)
- North West dRBMP maps on the [dRBMP map explorer](#)

[Summary of the draft river basin management plans](#)
22 October 2021 Policy paper

[River basin planning programmes of measures: mechanisms summary](#)
22 October 2021 Policy paper

[River basin planning: progress report](#)
22 October 2021 Policy paper

[River basin planning process overview](#)
22 October 2021 Policy paper

[River basin planning programmes of measures: case studies](#)
22 October 2021 Guidance



Step 3 – From the North West page in Catchment Data Explorer, click Mersey Lower [here](#)

North West River Basin District

Viewing draft river basin management plan data. [Switch to late:](#)

Draft river basin management plan consultation

The draft river basin management plan consultation is open from 22 October 2021 visit the [consultation page](#) to have your say.

Management catchments

There are 15 management catchments in this river basin district.

- [Alt and Crossens](#)
- [Derwent North West](#)
- [Douglas](#)
- [Irwell](#)
- [Kent and Leven](#)
- [Lune](#)
- [Mersey Lower](#)
- [Mersey Upper](#)
- [North West AWB](#)
- [North West GW](#)
- [North West TraC](#)
- [Ribble](#)
- [South West Lakes](#)
- [Weaver Gowy](#)
- [Wyre](#)



Step 4 – Explore local information for Mersey Lower catchment partnership [here](#) including catchment pages, classifications and objectives for the 4 operational catchments

Mersey Lower Management Catchment

Viewing draft river basin management plan data. [Switch to latest data](#)

Operational catchments

There are 4 operational catchments in this management catchment.

- [Dutton](#)
- [Glaze](#)
- [Sankey](#)
- [Wirral](#)





Introducing draft River Basin Management Plans consultation open 22 October 2021 until 22 April 2022. Working together in protecting and improving our water environment and reducing flood risk

Step 5 – View Mersey Lower catchment partnership page [here](#) including information about successes, future priorities, and measures

Partnership priority actions and measures for 2022 to 2027

<p>Confident</p> <p>Enhancement/no deterioration measures in 2020-2025 Water Industry National Environment Programme</p> <p>Reason for measure Control or manage point source discharges</p> <p>Delivery mechanism Confirmed water industry programme 2020-2025</p> <p>Location North West Trac</p>	<p>Confident</p> <p>RiverCare project with public engagement, surveys, clean-ups, improving habitat</p> <p>Reason for measure Manage modified habitats</p> <p>Delivery mechanism Grant giving trusts and businesses</p> <p>Location Rivacre Brook</p>	<p>Confident</p> <p>Improve water quality, habitat restoration and public engagement via the 'Speke to Spike' project</p> <p>Reason for measure Manage modified habitats</p> <p>Delivery mechanism Other local funding</p> <p>Location Dilton Brook/Halewood to Mersey Estuary MERSEY</p>
<p>Less certain</p> <p>Implement a range of nature based solutions to address urban diffuse pollution from highway outfalls</p> <p>Reason for measure Control or manage urban diffuse pollution</p> <p>Delivery mechanism Highways England Programme</p> <p>Barriers to delivery Funding applied for is not secured yet.</p> <p>Location North West Trac</p>	<p>Less certain</p> <p>Prevent and manage the spread of invasive species</p> <p>Reason for measure Control or manage invasive non-native species</p> <p>Delivery mechanism Other local funding</p> <p>Barriers to delivery Funding applied for is not yet secured</p> <p>Location Dilton</p>	<p>Less certain</p> <p>Restoration of heavily modified waterbodies to increase longitudinal and lateral connectivity</p> <p>Reason for measure Mitigate the impacts on ecology from physical modifications in modified waters</p> <p>Delivery mechanism Water Environment Improvement Fund</p> <p>Barriers to delivery Not yet applied for funding</p> <p>Location North West Trac</p>

Step 6 – View your local catchment partnership plan on the Catchment Based Approach website [here](#)

Step 7 – View the Mersey Lower catchment partnership plan [here](#)

4. Mersey Lower catchment classifications data from [this](#) page and ArcGiS online maps [here](#) showing the state of our waters

Classifications data for Mersey Lower Management Catchment

Viewing draft river basin management plan data. [Switch to latest data](#)

Classification data is a method for distinguishing the environmental condition or "status" of water bodies and putting them into one category or another.

Find out more information on classifications in the Summary of the draft river basin management plans document.

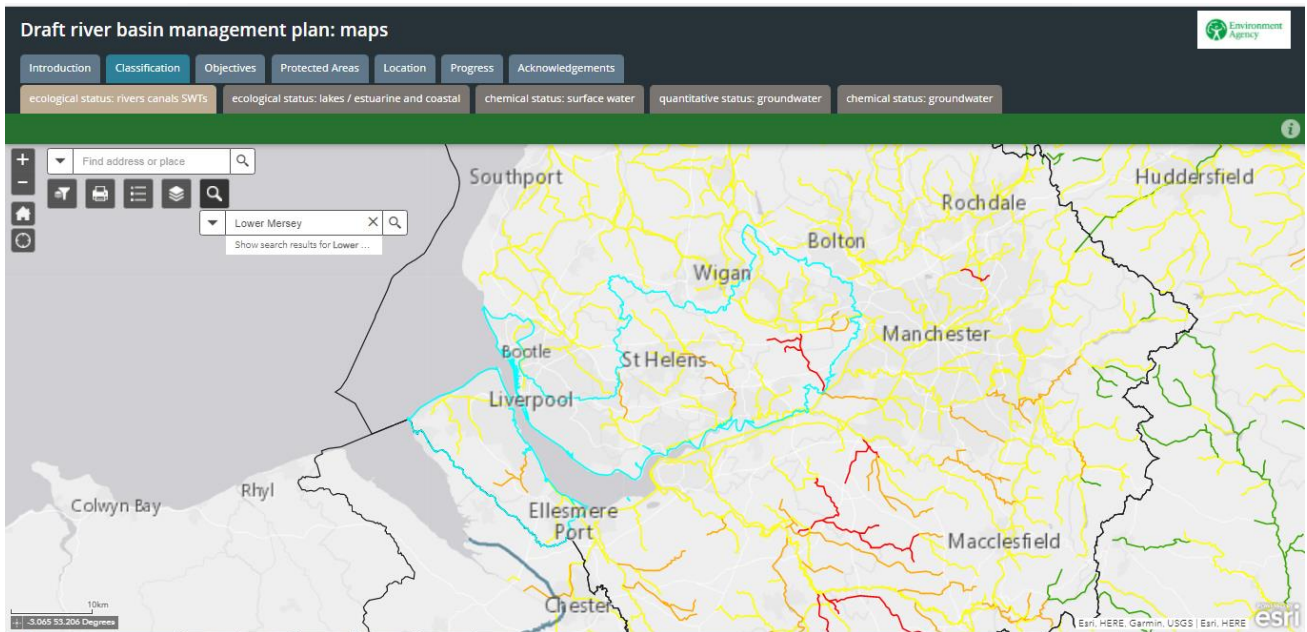


Time period: 2019 Cycle 2

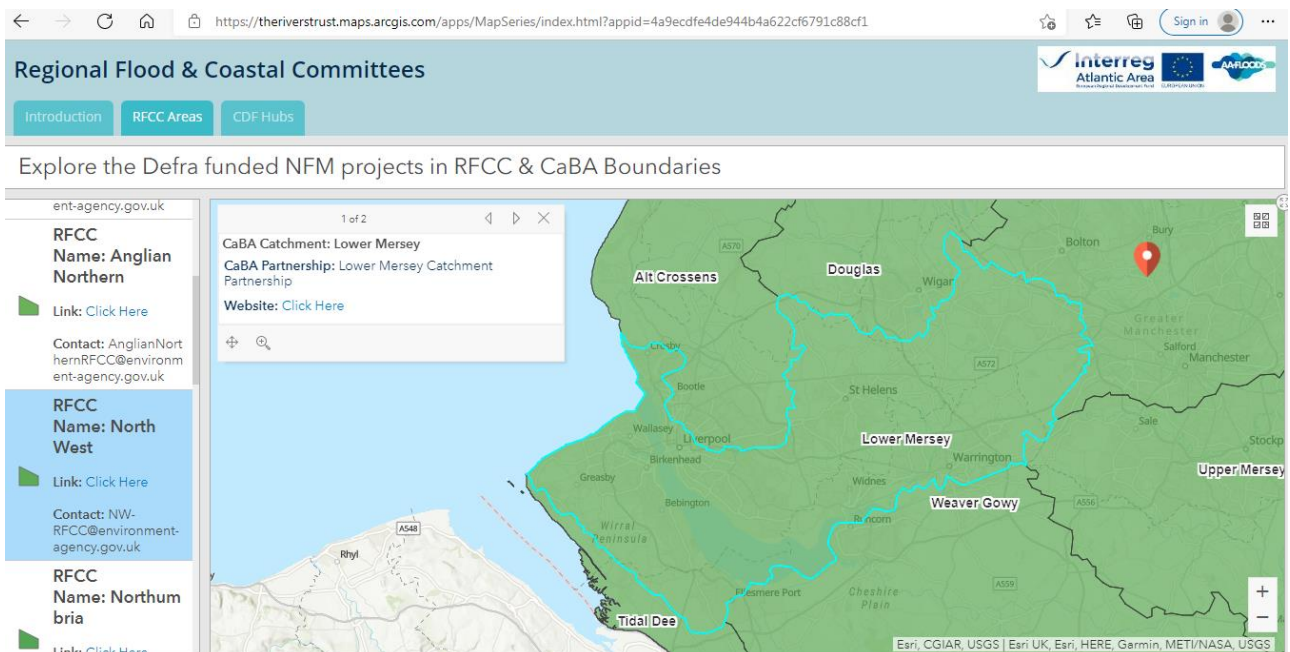
Number of water bodies

Water body categories	Natural	Artificial	Heavily modified	Total
River, canals and surface water transfers	3	0	21	24
Lake	1	0	0	1
Coastal	0	0	0	0
Estuarine	0	0	0	0

Introducing draft River Basin Management Plans consultation open 22 October 2021 until 22 April 2022. Working together in protecting and improving our water environment and reducing flood risk



Map below: Catchment Based Approach map of catchment partnerships [here](#) and Regional Flood and Coastal Committees [here](#) [this](#) for the Mersey Lower



Introducing draft River Basin Management Plans consultation open 22 October 2021 until 22 April 2022.
Working together in protecting and improving our water environment and reducing flood risk

The screenshot shows the 'Catchment Based Approach Data Hub' website. The main content is a map of the Lower Mersey Catchment Partnership, which is highlighted in a darker blue. The map includes various geographical labels such as 'Ormskirk', 'Wigan', 'Liverpool', and 'Widnes'. A search bar at the bottom right of the map contains the text 'CaBA Lower Mersey'. On the left side of the page, there is a sidebar with the following information:

- CaBA Catchment Partnerships**
- Anneka France**, The Rivers Trust
- Summary**: Boundaries of Catchment-Based Approach (CaBA) partnerships collaborating to deliver cross-cutting improvements to our water environments. Last updated: December 2018.
- View Full Details** button
- Dataset**: Feature Layer
- June 28, 2021**: Info Updated
- June 28, 2021**: Data Updated
- March 7, 2019**: [unlabeled update]
- I want to use this** button

The top of the page shows the URL: <https://data.catchmentbasedapproach.org/datasets/theriverstrust:caba-catchment-partnerships/explore?location=53.426549%2C-2.798...> and a 'Sign In' button.