

## South East River Basin District

# Draft River Basin Management Plan (dRBMP) consultation – guide to finding local or catchment information

26 January 2022

**Audience:** External

**Question:** How can I find information about my community and or catchment, including the objectives for the water environment?

Sharing this with colleagues, the public, catchment hosts and RFCCs might be a useful way to save time responding. It can reduce the steps or 'clicks' to finding local or catchment information. We're hoping this makes it easier for you to respond e.g. taking you straight to your catchment [page](#) - see dRBMP [step 5](#) below.

### FRMPs – consultation 22 October to 21 January 2022

1. Draft FRMPs consultation landing page [here](#)
2. Consultation information page [here](#)
3. FRMP GOV.UK [here](#)

### RBMPs – consultation 22 October to 22 April 2022

- Draft RBMPs consultation landing page [here](#), summary [here](#)
  - Introduction and guide [here](#) describing how to use the system and the basics and consultation documents [here](#)
  - The consultation questions 1 to 6 are below and have web links to relevant information
1. What are your views of these principles? When thinking about your answer, you may wish to consider how easy (or hard) you would find adopting the principles – link [here](#) (section2.1)
  2. Do you agree with the [environmental objectives in this draft plan](#)? - Which, if any, objectives or targets would you like to see changed and why?
  3. Are you aware of any funded measures that are missing from the [programmes of measures](#)? - Please let us know what measures are missing



**Introducing draft River Basin Management Plans consultation open 22 October 2021 until 22 April 2022. Working together in protecting and improving our water environment and reducing flood risk**

4. Do you have any comments on the potential new measures set out in the programmes of measures? Please tell us about any other new measures that could be taken forward with support from partners to achieve the objectives in the plans. Find out more using our summary [here](#)
  
5. Do you have any comments on the challenges and measures suggested as priorities in your local [catchment partnership's page](#)? If your response applies to a specific catchment partnership page, please select from list below (if it relates to more than one, please list them in your response above)
  
6. Do you have any further comments on the draft river basin management plans, not covered by the previous questions?

**Worked example: Here is an RBMP example for the New Forest Catchment Partnership in the South East Area. You can apply same steps for other places in this Area and in England.**

**1. Objectives including for 2027 for the New Forest catchment [here](#)**

**Objectives data for New Forest Management Catchment**

Viewing draft river basin management plan data. [Switch to latest data](#)

The objective is the planned status of a water body that must be achieved or maintained. There are two different status objectives for each water body. For surface waters these are ecological status or potential objective and chemical status objective; for groundwater these are quantitative status objective and chemical status objectives. The water body objectives are derived from the objectives for the relevant individual elements within the water body.

Find out more information on objectives in the [Summary of the draft river basin management plans document](#).



**Ecological status or potential objectives for surface water bodies**

Including those with less stringent objectives and extended deadlines

Status	Bad	Poor	Moderate	Good	High	Total
By 2015	0	0	3	4	0	7
By 2021	0	0	0	4	0	4
By 2027	0	0	1	6	0	7
Total	0	0	4	14	0	18

7 of the "by 2027" objectives are low confidence

**2. New Forest catchment measures**



**Introducing draft River Basin Management Plans consultation open 22 October 2021 until 22 April 2022.**  
**Working together in protecting and improving our water environment and reducing flood risk**

View local or catchment measures or actions in the excel spreadsheet below called draft RBMP summary programme of measures'. Do this by using the search or filter function in excel to refine your location of interest. The screenshot below shows the measures for the New Forest catchment

PoM category	Mechanism/Measure	Measure Info	Broad Type of Mechanism	RBD	Management Catchment	Operational Catchment	WB Name	Waterbody ID(s)	Environment Objective if relevant to
Not linked to 2027 outcomes	Watercress and Winterbournes	<p>Led by Hampshire &amp; Isle of Wight Wildlife Trust and Wessex Rivers Trust, this is an important project for the Test &amp; Itchen Catchment Partnership which will address multiple issues impacting 7 headwater streams. Funding has been secured from National Lottery Heritage Fund and the wider partnership until project completion in March 2025. <a href="https://www.hiwwt.org.uk/watercress-and-winterbournes">https://www.hiwwt.org.uk/watercress-and-winterbournes</a></p> <p>An innovative project using a grass roots approach to a variety of pressures impacting seven headwater streams in the Test and Itchen. Actions include:</p> <ul style="list-style-type: none"> <li>- a range of education and awareness raising programmes of work helping people engage with their local heritage</li> <li>- restoring habitats and helping protected species</li> <li>- natural flood management and encouraging water efficiency</li> <li>- supporting local economies - especially watercress growers by providing exemplar best practice to smaller watercress businesses</li> <li>- reducing diffuse pollution - sediment, agriculture and rural land measures, septic tank advice</li> <li>- removing invasive non-native species</li> </ul>	Catchment Partnership project led by local Wildlife Trust	South East	Test & Itchen, New Forest, Isle of Wight, another (- Adur & Ouse?)	7 headwater catchments	Various	Various	Multiple
0									
1									
2									
3									
4									
5									
6									
7									
8									

Please note: there are also National measures which may apply to South East river basin including New Forest catchment not included above e.g. 'Policy and voluntary driven abstraction reductions against ground and surface water sustainability assessment standards under CaBA Chalkstream Strategy Actions, Environment Bill sustainability standards and designations. Includes review of licences and flow objective achievement against the naturalised perennial head

**3. Steps to your catchment pages and local information**

Example: New Forest

- Using the search function on Catchment Data Explorer (CDE) automatically takes you to the 'latest data' view of what you are searching for.
- You have to click on the link under the heading to view "draft plan data".
- You can only access catchment partnership pages on the "draft plan data" CDE view. Partnership pages are on the management catchment pages on CDE, one page below river basin district.
- Click on the map or links to the left hand side to find the management catchment (or search for it and switch to draft plan data). Scroll down to below the data section on that page to find link to the catchment partnership page.



**Introducing draft River Basin Management Plans consultation open 22 October 2021 until 22 April 2022. Working together in protecting and improving our water environment and reducing flood risk**

https://www.gov.uk/government/collections/draft-river-basin-management-plans-2021

Collection  
**Draft river basin management plans: 2021**

River basin management plans (RBMPs) describe the challenges that threaten the water environment and how these challenges can be managed and funded.

From: [Environment Agency](#)  
Published 22 October 2021

- Contents
- [Anglian RBD](#)
  - [Humber RBD](#)
  - [Northumbria RBD](#)
  - [North West RBD](#)
  - [Severn RBD](#)
  - [South East RBD](#)
  - [South West RBD](#)

- Related content**
- [Summary of the draft river basin management plans](#)
  - [River basin planning: progress report](#)
  - [Guide to the draft river basin management plans](#)
  - River basin planning programmes of

**Step 2** – Click South East dRBMP data on Catchment Data Explorer [here](#)

**South East RBD**

These links and documents form the South East RBD dRBMP. You can access:

- [South East dRBMP data on the catchment data explorer](#)
- South East dRBMP maps on the [dRBMP map explorer](#)

**[Summary of the draft river basin management plans](#)**  
22 October 2021 Policy paper

**[River basin planning programmes of measures: mechanisms summary](#)**  
22 October 2021 Policy paper

**[River basin planning: progress report](#)**  
22 October 2021 Policy paper

**[River basin planning process overview](#)**  
22 October 2021 Policy paper

**[River basin planning programmes of measures: case studies](#)**  
22 October 2021 Guidance

**Step 3** – From the South East page in Catchment Data Explorer, click New Forest [here](#)

Viewing draft river basin management plan data. [Switch to latest data](#)

**Draft river basin management plan consultation**  
The draft river basin management plan consultation is open from 22 October 2021, visit the [consultation page](#) to have your say.

### Management catchments

There are 12 management catchments in this river basin district.

- [Adur and Ouse](#)
- [Arun and Western Streams](#)
- [Cuckmere and Pevensy Levels](#)
- [East Hampshire](#)
- [Isle of Wight](#)
- [New Forest](#)
- [Rother](#)
- [South East AWB](#)
- [South East GW](#)
- [South East TraC](#)
- [Stour](#)
- [Test and Itchen](#)



**Step 4** – Explore local information for New Forest catchment partnership [here](#) including catchment pages, classifications and objectives for the 5 operational catchments

### New Forest Management Catchment

Viewing draft river basin management plan data. [Switch to latest data](#)

#### Operational catchments

There are 5 operational catchments in this management catchment.

- [Becton Bunny](#)
- [Langdown Stream](#)
- [New Forest - Bartley Water](#)
- [New Forest - Hatchet Sowley](#)
- [New Forest - Lyminster and Beaulieu](#)





**Introducing draft River Basin Management Plans consultation open 22 October 2021 until 22 April 2022. Working together in protecting and improving our water environment and reducing flood risk**

View New Forest catchment partnership page [here](#) including information about successes, future priorities, and measures

**Partnership priority actions and measures for 2022 to 2027**

<p><b>Confident</b></p> <p>Enhancement to deterioration measures in 2020-2025 Water Industry National Environment Programme</p> <p><b>Reason for measure</b> Control or manage point source discharges</p> <p><b>Delivery mechanism</b> Confirmed water industry programme 2020-2025</p> <p><b>Location</b> <a href="#">New Forest</a></p>	<p><b>Confident</b></p> <p>Hatchet Pond - Improvements to Protected Area and water bodies</p> <p><b>Reason for measure</b> Manage modified habitats</p> <p><b>Delivery mechanism</b> EU funding</p> <p><b>Location</b> <a href="#">Hatchet Pond</a> <a href="#">Hatchet Stream</a></p>	
<p><b>Less certain</b></p> <p>New Forest Invasive Non-native Species control</p> <p><b>Reason for measure</b> Control or manage invasive non-native species</p> <p><b>Delivery mechanism</b> Water Environment Improvement Fund</p> <p><b>Barriers to delivery</b> Long term funding and partner funding</p> <p><b>Location</b> <a href="#">Bartley Water</a> <a href="#">Lymington River</a> <a href="#">Ober Water</a> <a href="#">Coles Stream</a> <a href="#">Saxon Water</a> <a href="#">Beaulieu</a> <a href="#">Cadmee River</a></p>	<p><b>Less certain</b></p> <p>New Forest District Fish Easement Project - address barriers to fish passage to support sustainable fish communities</p> <p><b>Reason for measure</b> Mitigate the impacts on ecology from physical modifications in modified waters</p> <p><b>Delivery mechanism</b> Water Environment Improvement Fund</p> <p><b>Barriers to delivery</b> Partner delivery, wider funding sources and resource to project manage</p> <p><b>Location</b></p>	<p><b>Less certain</b></p> <p>Bartley Water and Fletchwood Tributary</p> <p><b>Reason for measure</b> Control or manage rural diffuse pollution</p> <p><b>Delivery mechanism</b> Water Environment Improvement Fund</p> <p><b>Barriers to delivery</b> Long term funding and reliant on land owner voluntary engagement</p> <p><b>Location</b> <a href="#">Bartley Water</a> <a href="#">Fletchwood Trib</a></p>

**Step 6** – View your local catchment partnership plan on the Catchment Based Approach website [here](#)

**Step 7** – View the New Forest catchment partnership plan [here](#)

**4. New Forest catchment classifications data** from [this](#) page and ArcGIS online maps [here](#) showing the state of our waters

**Classifications data for New Forest Management Catchment**

Viewing draft river basin management plan data [Switch to latest data](#)

Classification data is a method for distinguishing the environmental condition or "status" of water bodies and putting them into one category or another.

Find out more information on classifications in the Summary of the draft river basin management plans document.



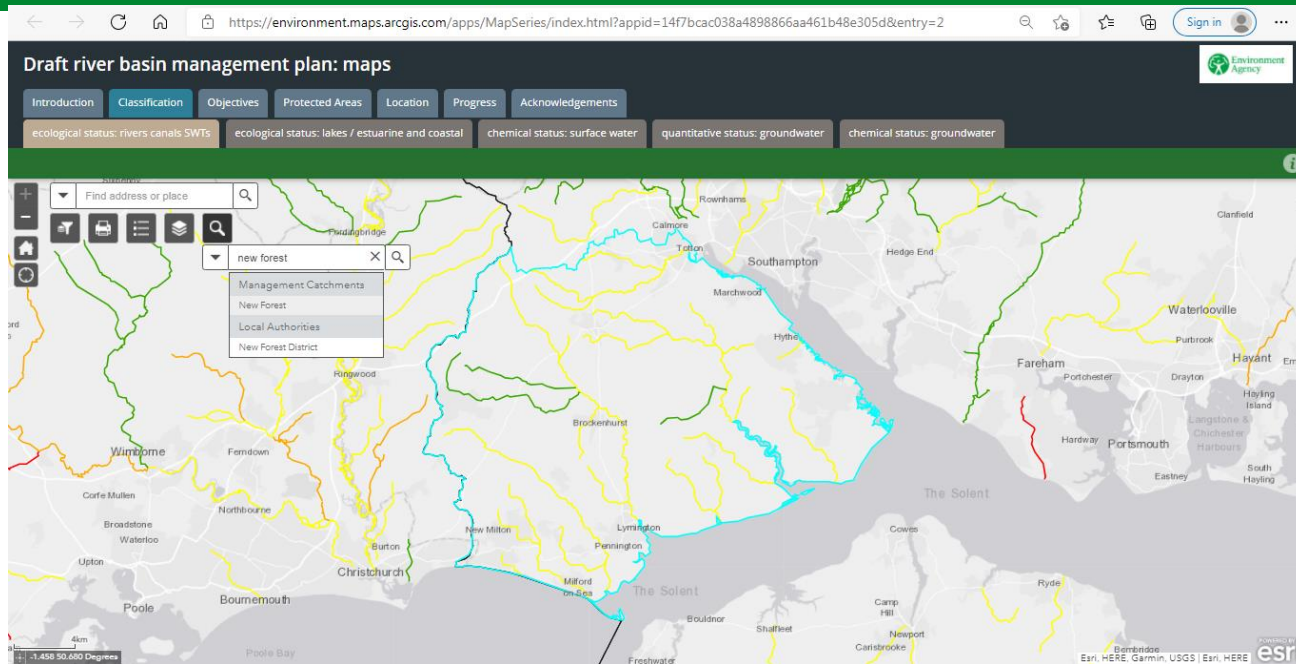
Time period: 2019 Cycle 2

**Number of water bodies**

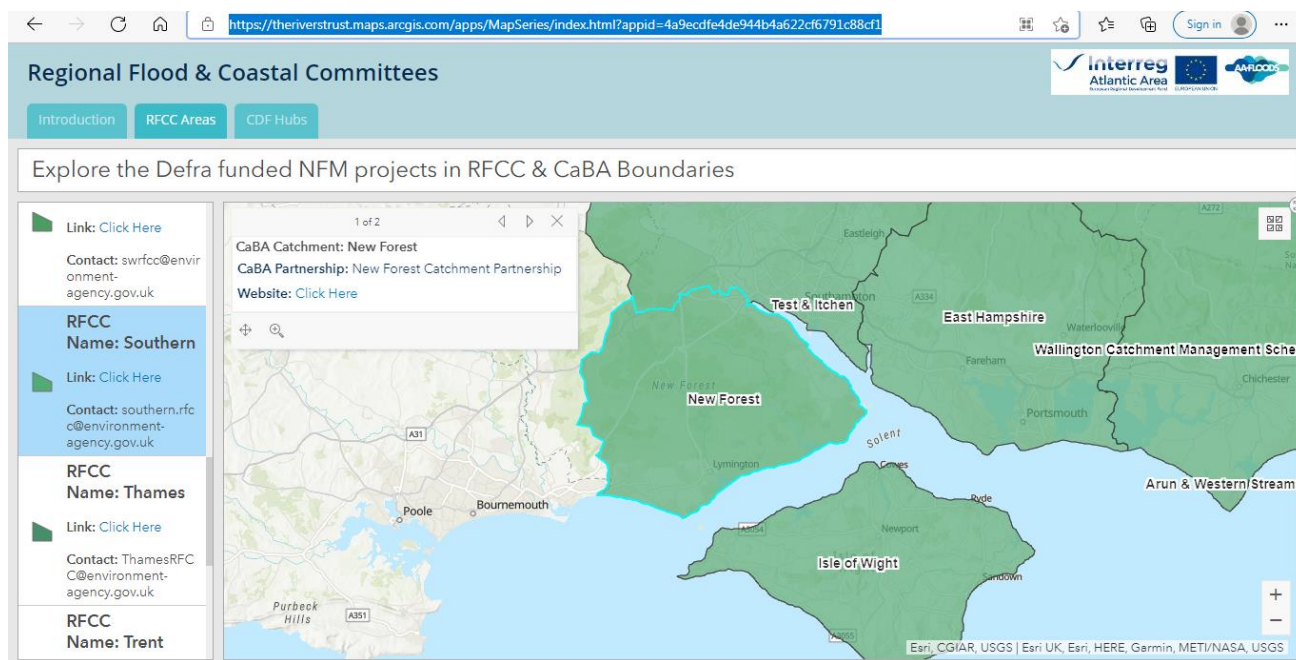
Water body categories	Natural	Artificial	Heavily modified	Total
River, canals and surface water transfers	8	0	8	16
Lake	0	0	2	2
Coastal	0	0	0	0
Estuarine	0	0	0	0



Introducing draft River Basin Management Plans consultation open 22 October 2021 until 22 April 2022. Working together in protecting and improving our water environment and reducing flood risk



Map below: Catchment Based Approach map of catchment partnerships [here](#) and Regional Flood and Coastal Committees [here this](#) for the New Forest





# Introducing draft River Basin Management Plans consultation open 22 October 2021 until 22 April 2022.

Working

The screenshot shows the 'Catchment Based Approach Data Hub' interface. On the left, there is a metadata panel for the 'CaBA Partnership: New Forest Catchment Partnership' dataset. The panel includes a description, a 'View Full Details' button, and several key attributes: Dataset (Feature Layer), Info Updated (June 28, 2021), Data Updated (June 28, 2021), Published Date (March 7, 2019), 110 Records (with a 'View data table' link), Public access (Anyone can see this content), and Custom License (with a 'View license details' link). At the bottom of the panel is a button labeled 'I want to use this'. The main area is a map of the New Forest region, showing various towns and catchment areas. A search bar at the bottom right of the map contains the text 'new forest'. The map is powered by Esri and includes a 'View Table' button in the top right corner.