



## Dorset catchment, South West

# Draft River Basin Management Plan (dRBMP) consultation – guide to finding local or catchment information

26 January 2022

**Audience:** External

**Question:** How can I find information about my community and or catchment, including the objectives for the water environment?

Sharing this with colleagues, the public, catchment hosts and RFCCs might be a useful way to save time responding. It can reduce the steps or 'clicks' to finding local or catchment information. We're hoping this makes it easier for you to respond e.g. taking you straight to your catchment [page](#) - see dRBMP [step 5](#) below.

### FRMPs – consultation 22 October to 21 January 2022

1. Draft FRMPs consultation landing page [here](#)
2. Consultation information page [here](#)
3. FRMP GOV.UK [here](#)

### RBMPs – consultation 22 October to 22 April 2022

- Draft RBMPs consultation landing page [here](#), summary [here](#)
  - Introduction and guide [here](#) describing how to use the system and the basics and consultation documents [here](#)
  - The consultation questions 1 to 6 are below and have web links to relevant information
1. What are your views of these principles? When thinking about your answer, you may wish to consider how easy (or hard) you would find adopting the principles – link [here](#) (section2.1)
  2. Do you agree with the [environmental objectives in this draft plan](#)? - Which, if any, objectives or targets would you like to see changed and why?
  3. Are you aware of any funded measures that are missing from the [programmes of measures](#)? - Please let us know what measures are missing



**Introducing draft River Basin Management Plans consultation open 22 October 2021 until 22 April 2022.**  
**Working together in protecting and improving our water environment and reducing flood risk**

4. Do you have any comments on the potential new measures set out in the programmes of measures? Please tell us about any other new measures that could be taken forward with support from partners to achieve the objectives in the plans. Find out more using our summary [here](#)
5. Do you have any comments on the challenges and measures suggested as priorities in your local [catchment partnership's page](#)? If your response applies to a specific catchment partnership page, please select from list below (if it relates to more than one, please list them in your response above)
6. Do you have any further comments on the draft river basin management plans, not covered by the previous questions?

**Worked example: Here is an RBMP example for the Dorset Stour Catchment Partnership in the South West Area. You can apply same steps for other places in this Area and in England.**

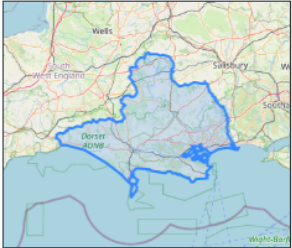
**1. Objectives including for 2027 for the Dorset catchment [here](#)**

<https://environment.data.gov.uk/catchment-planning/ManagementCatchment/3030/objectives>

### Objectives data for Dorset Management Catchment

Viewing latest data (Updated on 14 September 2021). [Switch to draft river basin management plan data](#)

The objective is the planned status of a water body that must be achieved or maintained. There are two different status objectives for each water body. For surface waters these are ecological status or potential objective and chemical status objective; for groundwater these are quantitative status objective and chemical status objectives. The water body objectives are derived from the objectives for the relevant individual elements within the water body.



#### Ecological status or potential objectives for surface water bodies

Including those with less stringent objectives and extended deadlines

Status	Bad	Poor	Moderate	Good	High	Total
By 2015	4	2	14	14	0	34
By 2021	0	0	8	6	0	14
By 2027	0	0	4	16	0	20
Total	4	2	26	36	0	68

0 of the "by 2027" objectives are low confidence



## 2. Dorset catchment measures

View local or catchment measures or actions in the excel spreadsheet [here](#) called ‘draft RBMP summary programme of measures’. Do this by using the search or filter function in excel to refine your location of interest. The screenshot below shows the measures for the Dorset catchment

PoM category	Mechanism/Measure	Measure Info	Broad Type of Mechanism	RBD	Management Catchment	Operational Catchment
Not linked to 2027 outcomes	Dorset Stour Environment Agency Catchment Strategy	Prioritised plan for works and locations	Strategic planning	South West	Dorset	Stour
Not linked to 2027 outcomes	Lower Stour Flood Strategy	Reducing flood risk	Strategic planning	South West	Dorset	Lower Stour
Not linked to 2027 outcomes	Poole Harbour partnerships - Hooke River, Winfrith Site Restoration	Restoring and managing habitats, enhancing established and building new structures for natural flood management and woody habitats.	Partnership	South West	Dorset	Catchment scale in Poole Harbour


Please note: there are also National measures which may apply to South West river basin including Dorset catchment not included above e.g. Strengthen ‘catchment to coast’ approach, scaling up implementation of nature based solutions through spatial prioritisation including engaging coastal stakeholders and others providing a suitable forum for discussion and cooperation with a much broader range of partners’

## 3. Steps to your catchment pages and local information

- Example: Dorset, Poole Harbour
- Using the search function on Catchment Data Explorer (CDE) automatically takes you to the ‘latest data’ view of what you are searching for.
- You have to click on the link under the heading to view “draft plan data”.
- You can only access catchment partnership pages on the “draft plan data” CDE view. Partnership pages are on the management catchment pages on CDE, one page below river basin district.
- Click on the map or links to the left hand side to find the management catchment (or search for it and switch to draft plan data). Scroll down to below the data section on that page to find link to the catchment partnership page.



**Step 1** – click South West [here](#)

 <https://www.gov.uk/government/collections/draft-river-basin-management-plans-2021>

Collection

**Draft river basin management plans: 2021**

River basin management plans (RBMPs) describe the challenges that threaten the water environment and how these challenges can be managed and funded.


---

From: [Environment Agency](#)  
Published 22 October 2021

Contents

- [Anglian RBD](#)
- [Humber RBD](#)
- [Northumbria RBD](#)
- [North West RBD](#)
- [Severn RBD](#)
- [South East RBD](#)
- [South West RBD](#)

**Step 2** – click South West dRBMP data on Catchment Data Explorer [here](#)

 <https://www.gov.uk/government/collections/draft-river-basin-management-plans-2021#south-west-rbd>

**South West RBD**

These links and documents form the South West RBD dRBMP. You can access:

- [South West dRBMP data on the catchment data explorer](#)
- South West dRBMP maps on the [dRBMP map explorer](#)

---

[Summary of the draft river basin management plans](#)  
22 October 2021   Policy paper

---

[River basin planning programmes of measures: mechanisms summary](#)  
22 October 2021   Policy paper

---

[River basin planning: progress report](#)  
22 October 2021   Policy paper

---

[River basin planning process overview](#)  
22 October 2021   Policy paper



Introducing draft River Basin Management Plans consultation open 22 October 2021 until 22 April 2022.  
Working together in protecting and improving our water environment and reducing flood risk

**Step 3** – From the South West page in Catchment Data Explorer, click Dorset [here](#)

### South West River Basin District

Viewing draft river basin management plan data. [Switch to latest data](#)

#### Draft river basin management plan consultation

The draft river basin management plan consultation is open from 22 October 2021, visit the [consultation page](#) to have your say.

#### Related links

- [More plan info on GOV.UK](#)
- [Draft plan maps on ArcGIS online](#)
- [Draft flood risk management plans](#)

#### Management catchments

There are 12 management catchments in this river basin district.

- [Avon Hampshire](#)
- [Cornwall West and the Fal](#)
- [Devon East](#)
- [Devon South](#)
- [Dorset](#)
- [North Cornwall Seaton Looe and Fowey](#)
- [North Devon](#)
- [Somerset South and West](#)
- [South West AWB](#)
- [South West GW](#)
- [South West Trac](#)
- [Tamar](#)

**Step 4** – Explore local information for Dorset catchment partnership [here](#) including catchment pages, classifications and objectives for the 3 operational catchments

https://environment.data.gov.uk/catchment-planning/v/c3-draft-plan/ManagementCatchment/3030

Department for Environment Food & Rural Affairs

Data Services Platform

Environment Agency

Catchment Data Explorer

Home Search Help API

[Home](#) / [South West](#) / Dorset

### Dorset Management Catchment

Viewing draft river basin management plan data. [Switch to latest data](#)

#### Operational catchments

There are 3 operational catchments in this management catchment.

- [Poole Harbour Rivers](#)
- [Stour Dorset](#)
- [West Dorset Rivers](#)



Introducing draft River Basin Management Plans consultation open 22 October 2021 until 22 April 2022.  
Working together in protecting and improving our water environment and reducing flood risk

**Step 5 – View Dorset catchment partnership page [here](#) including information about successes, future priorities, and measures**

https://environment.data.gov.uk/catchment-planning/v/c3-draft-plan/CatchmentPartnership/WEIF1901

Partnership priority actions and measures for 2022 to 2027

Confident

**Engage with communities to build strong links and embed improvements to water environment in wider project delivery**

**Reason for measure**  
Mitigate the impacts on ecology from physical modifications in modified waters

**Delivery mechanism**  
Water Environment Improvement Fund

**Location**  
[West Dorset Rivers](#)

Confident

**Reduce surface-water flooding in priority rural areas through co-design and delivery of NFM solutions**

**Reason for measure**  
Manage modified habitats

**Delivery mechanism**  
Water Environment Improvement Fund

**Location**  
[Poole Harbour Rivers West Dorset Rivers Stour Dorset](#)

Confident

**Facilitate future beaver introduction through feasibility studies on potential impact on unique Dorset environments**

**Reason for measure**  
Manage modified habitats

**Delivery mechanism**  
Voluntary initiatives

**Location**  
[Corfe River Hooke](#)

Confident

**Establishment of a farmer-led nitrate management scheme for the Poole Harbour catchments to reduce nitrate inputs**

**Reason for measure**  
Control or manage rural diffuse pollution

**Delivery mechanism**  
Voluntary initiatives

Confident

**Multi-benefit solutions in key locations of the Dorset Stour, Poole Harbour and West Dorset catchments**

**Reason for measure**  
Control or manage rural diffuse pollution

**Delivery mechanism**  
Water Environment Improvement Fund

Confident

**Enhancement/no deterioration measures in 2020-2025 Water Industry National Environment Programme**

**Reason for measure**  
Control or manage point source discharges

**Delivery mechanism**  
Confirmed water industry programme

**Step 6 – View your local catchment partnership plan on the Catchment Based Approach website [here](#)**

**Step 7 – View the Dorset Stour catchment partnership plan [here](#)**

**4. Dorset catchment classifications data from [this](#) page and ArcGiS online maps [here](#) showing the state of our waters**

https://environment.data.gov.uk/catchment-planning/v/c3-draft-plan/ManagementCatchment/3030/classifications

Environment Agency

Catchment Data Explorer

Home Search Help API

[Home](#) / [South West](#) / [Dorset](#) / [Classifications data](#)

Classifications data for Dorset Management Catchment

Viewing draft river basin management plan data. [Switch to latest data](#)

Classification data is a method for distinguishing the environmental condition or "status" of water bodies and putting them into one category or another.

Find out more information on classifications in the [Summary of the draft river basin management plans document](#).

Time period: 2019 Cycle 2

Number of water bodies

Water body categories	Natural	Artificial	Heavily modified	Total
River, canals and surface water transfers	64	0	3	67
Lake	1	0	0	1

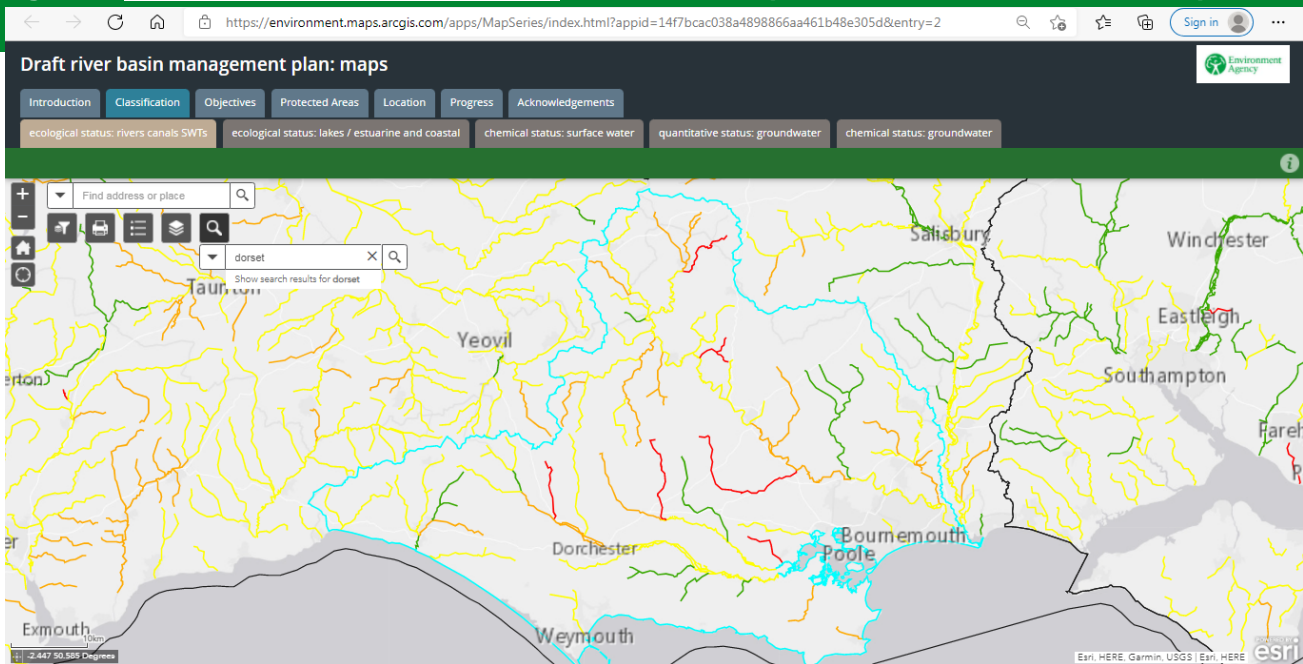
RBMPs guide to viewing local information
6



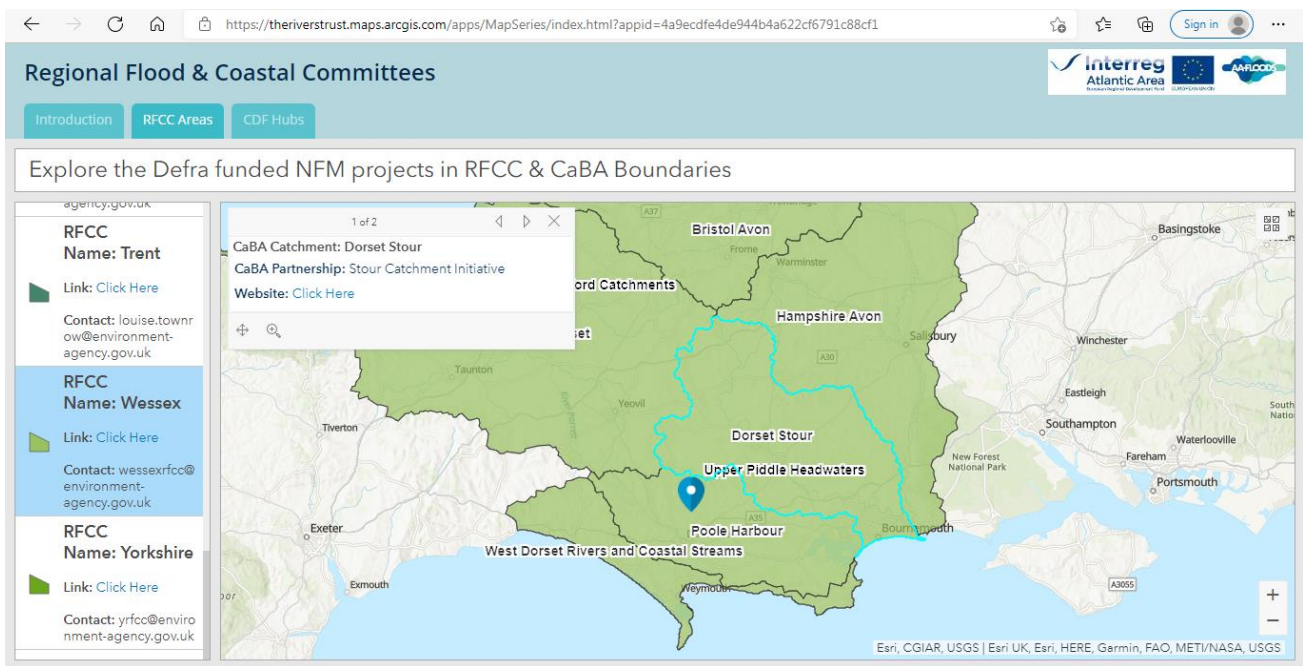


Introducing draft River Basin Management Plans consultation open 22 October 2021 until 22 April 2022.

Working



Map below: Catchment Based Approach map of catchment partnerships [here](#) and Regional Flood and Coastal Committees [here](#)





Introducing draft River Basin Management Plans consultation open 22 October 2021 until 22 April 2022.

Working

Catchment Based Approach Data Hub

Approach (CaBA) partnerships collaborating to deliver cross-cutting improvements to our water environments. Last updated: December 2018.

[View Full Details](#)

**Dataset**  
Feature Layer

**June 28, 2021**  
Info Updated

**June 28, 2021**  
Data Updated

**March 7, 2019**  
Published Date

**110 Records**  
[View data table](#)

**Public**  
Anyone can see this content

**Custom License**  
[View license details](#)

[I want to use this](#)

110 records

[View Table](#)

Salisbury

Yeovil

Dorchester

Bournemouth

Poole

CaBA Partnership: Stour Catchment Initiative

Dorset, England, GBR

Powered by Esri